

NEWPORT GIRLS HIGH SCHOOL – HERITAGE IMPACT ASSESSMENT

BHN
architects

BAART HARRIES NEWALL
Chartered Architects
1 Wilderhope House
Pountney Gardens
Shrewsbury
SY3 7LG

Tel: Shrewsbury (01743) 361261
Fax: Shrewsbury (01743) 364944
Email: studio@bhn.co.uk
Website: www.bhn.co.uk

Follow us on [Facebook](#) & [Twitter](#)

LOCATION:

Newport Girls' High School Academy Trust
Wellington Road
Newport
Shropshire
TF10 7HL

SIGNIFICANCE:

The property is not a listed building and is not within the Newport Conservation Area. We are informed however that it is a non-designated heritage asset.

The School was founded in 1919 as a Girls Grammar School. The original building has a date stone of 1925, with an E shaped floor plan as shown in the Phases of Development diagram.

The original building is in shades of red and buff brickwork, with slate roofs and uPVC casement window (presumed formerly timber sash windows), generally in a neo-Georgian style. It comprises a central entrance block with stone doorcase facing east onto Wellington Road, with side wing to the north and south. Central, north and south branches of the E plan extended to the west at the rear of the building.



ADJACENT PROPERTIES:

Examination of Historic England records show that no Grade 1 or Grade 2* listed buildings are located nearby.

There are no historic building to the south of the school site along Wellington Road. Other than the Girls High School development is limited to modern housing and a primary school extending south to edge of development.

To the north modern housing and a surgery continue for approx. 200m before giving way to 1930's housing, Edwardian, C19 and then C18 development towards the historic core of the town.

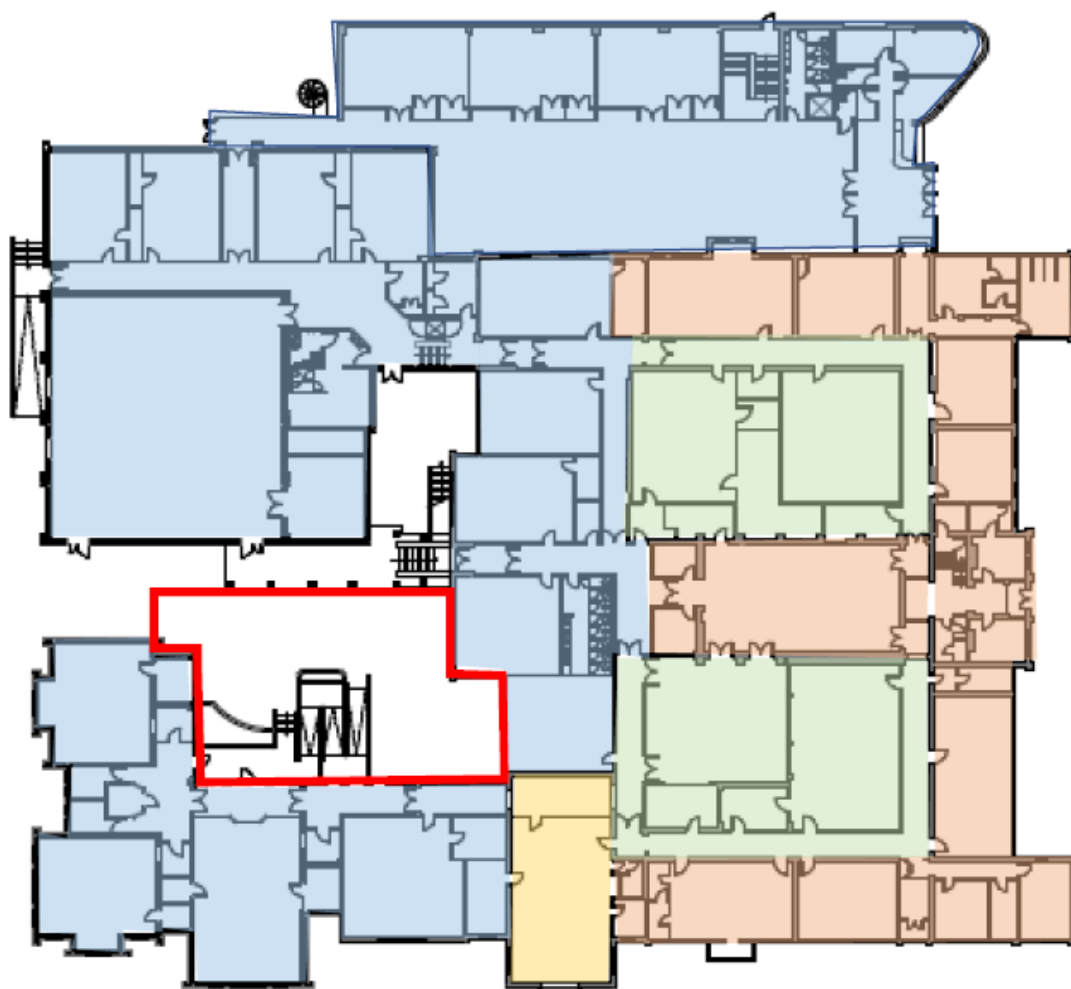
The proposed development at Newport Girls High School therefore has no effect on the setting of any listed buildings or on the conservation area.

CONSERVATION AREA

A plan is enclosed showing the outline of the Newport Conservation area, and the location of the Girls High School some 200-300m to the south along Wellington Road. The school site firmly within the zone of C20 southern expansion of Newport and has no impact on the Conservation Area.

PHASES OF DEVELOPMENT

The plan below shows the phases of development of the Girls High School site. Prior to 1919, the site comprises undeveloped fields in agricultural use.

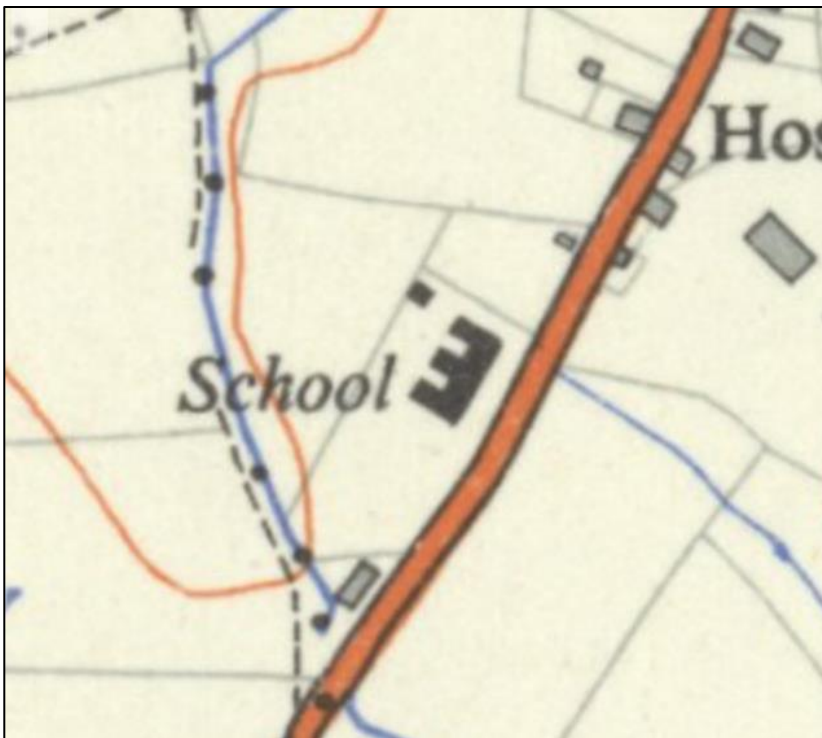


| | | |
|--|----------------------|--|
| | | Site Undeveloped on 1892-1914 OS map. |
| | 1925 Development | Same outline on 1937-61 OS 1:25,000 map. |
| | Late C20 development | School expanded in second half of C20. |
| | Unknown | Assumed late C20. |
| | C21 Development | Recent extension completed in |
| | 2020 | Proposed development |



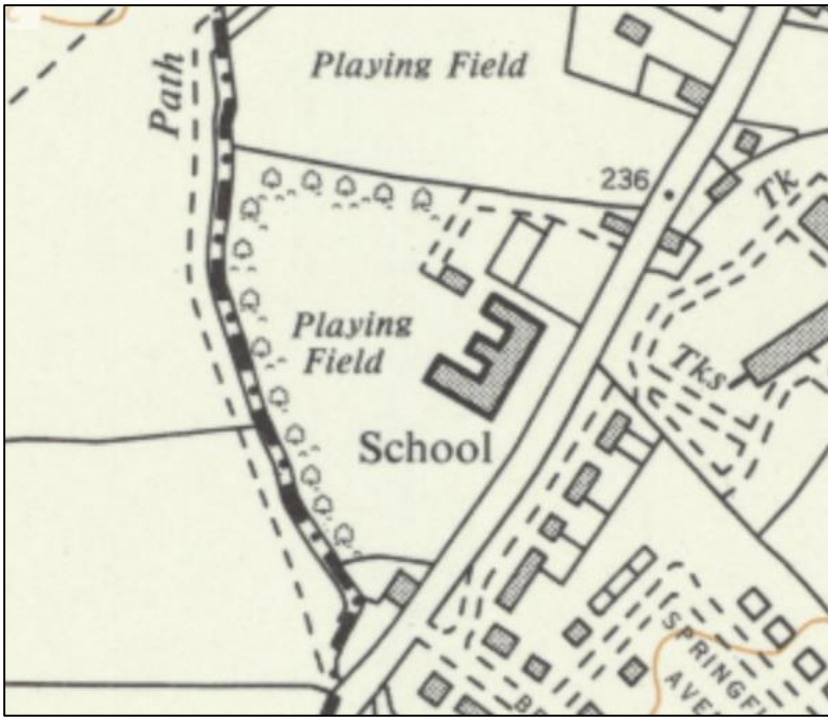
1914 OS 25"

1932 Maps show the original E shaped plan of the 1919 school.

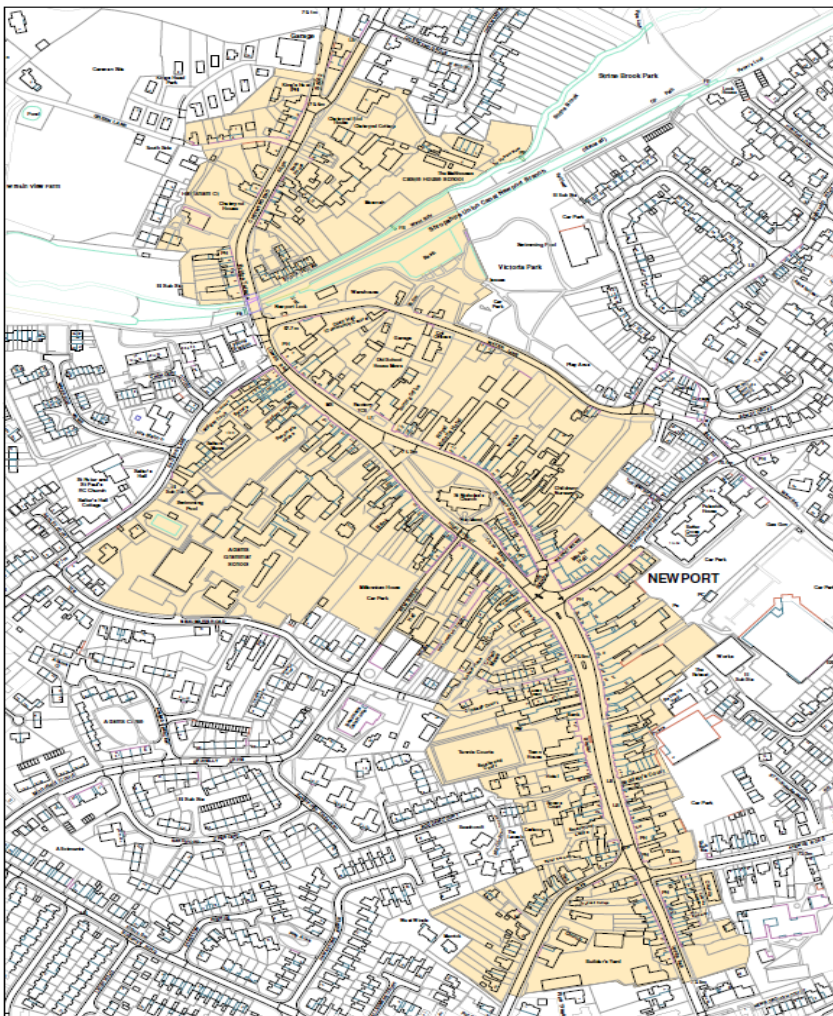


1932 OS 1:25,000

1949-69 OS Maps show the same extent of development, placing the later expansion of the school firmly in the late C20.



1949-69 OS 1:10,560



NEWPORT CONSERVATION AREA

NEWPORT GIRLS HIGH SCHOOL ACADEMY - SITE LOCATION PLAN

